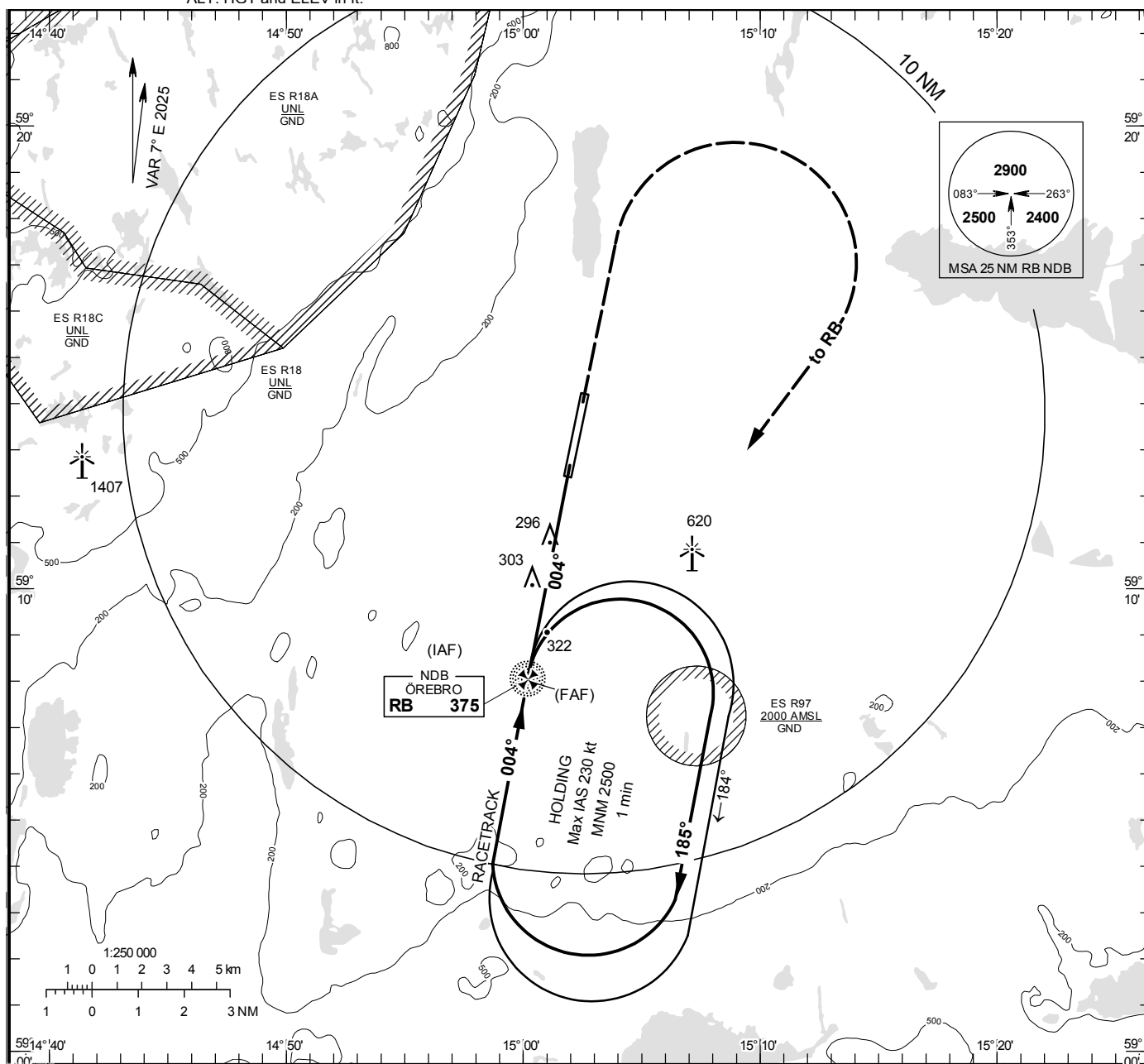


INSTRUMENT APPROACH CHART – ICAO

THR ELEV 161.3 ft, AD ELEV 192 ft
 OCH are related to THR.
 Circling OCH are related to AD ELEV.
 BRG are MAG
 ALT. HGT and ELEV in ft.

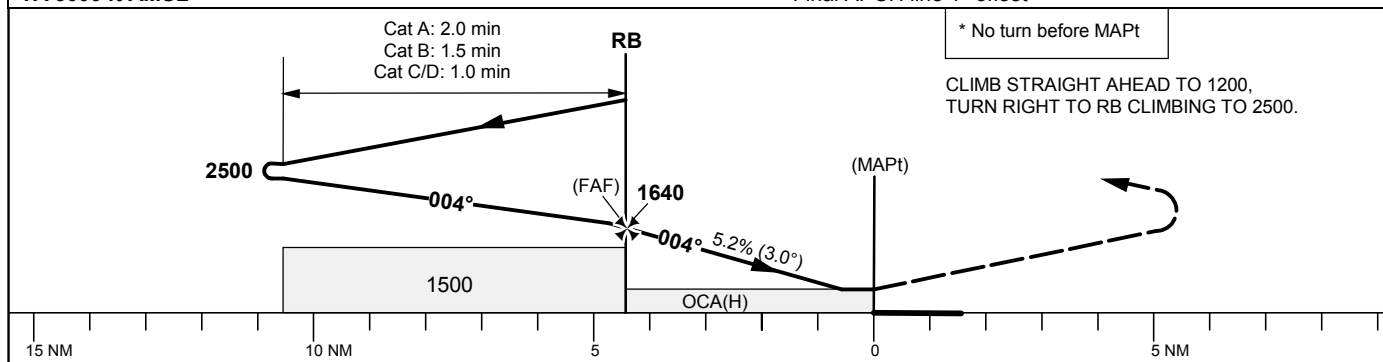
ÖREBRO TOWER

120.280



TA 5000 ft AMSL

Final APCH line 1° offset



OCA (H)					Final approach	Distance FAF-MAPT 4.5 NM*							
Cat of ACFT	A	B	C	D	DME NOE NM	6		5		4		3	
Straight-in Approach	570 (410)				ALT	1620		1300		980		660	
Circling	600 (410)	690 (500)	1020 (830)		GS	kt	80	100	120	140	160	180	
					Time	min:s	3:23	2:42	2:15	1:56	1:41	1:30	
					Rate of descent	ft/min	425	535	635	745	850	955	

CHANGE: Editorial